

A-2700 Slant Back Kiosk



- ▣ **Directory Application**
 Companies/Organizations/
 Tenants and People
 Search by Tenant or Person
 Updated within Seconds Online
- ▣ **Building Information**
- ▣ **Area Amenities Map**
- ▣ **Weather**
 Current Weather Conditions
 5 Day Weather Forecast
- ▣ **Local Traffic**
 Camera Feeds Available via Touch
- ▣ **Ad Rotator**
 Graphic Announcements or Ads
 Updated via Admin Online
- ▣ **Text Ticker**
 Text Announcements
 Updated via Admin Online

Description

Model:	A-2700
Description:	Slant Back Kiosk
Orientation:	Landscape
Enclosure:	Stainless Steel
Display:	27" Touch
Computer:	Ultra-Small Form Factor PC
Ventilation:	AC Infinity AI-CFD80BA Dual 80 Quiet
Power:	100-240 VAC, 50/60 Hz Dedicated Circuit
Internet:	Hardwired Internet Connection with RJ45 Receptacle

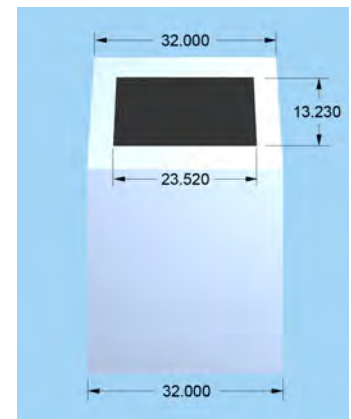
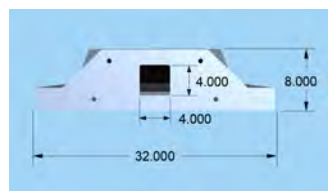
Maintenance Access:
 Two (2) Locked Removable Panels to access the Display and Computer from the rear of the kiosk.

Dimensions

Height:	54"
Width:	32"
Depth:	3"
Base Width:	32"
Base Depth:	8"

Installation

Bottom Base:
 Base can be attached to the floor using bolts or adhesive material.



Digital Building Information Center

Standard Directory Menu



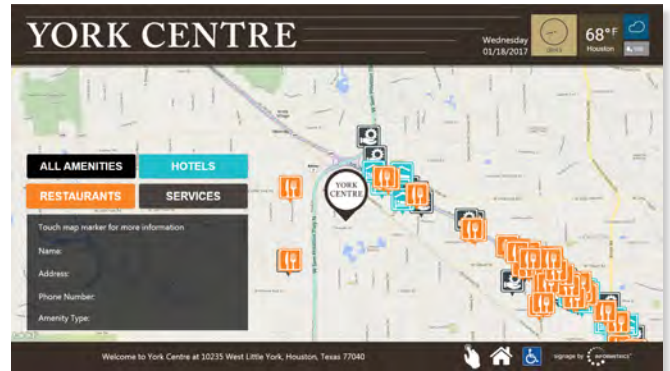
Custom Directory Menu



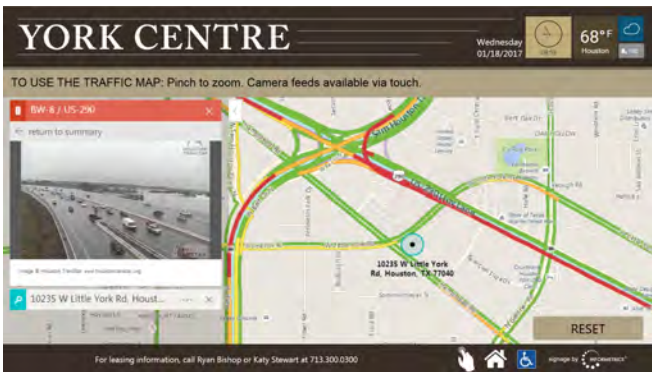
Directory Application



Area Amenities Map



Local Traffic



5 Day Weather Forecast

