

# A-3200 Slant Back Kiosk



- ❑ **Directory Application**  
Companies/Organizations/Tenants  
People  
Search by Tenant or Person  
Updated within Seconds Online
- ❑ **Building Information**
- ❑ **Area Amenities Map**
- ❑ **Weather**  
Current Weather Conditions  
5 Day Weather Forecast
- ❑ **Local Traffic**  
Camera Feeds Available via Touch
- ❑ **Ad Rotator**  
Graphic Announcements or Ads  
Updated via Admin Online
- ❑ **Text Ticker**  
Text Announcements  
Updated via Admin Online

## Description

Model:	A-3200
Description:	Slant Back Kiosk
Orientation:	Landscape
Enclosure:	Stainless Steel
Display:	32" Touch
Computer:	Ultra-Small Form Factor PC
Ventilation:	AC Infinity AI-CFD80BA Dual 80 Quiet
Power:	100-240 VAC, 50/60 Hz Dedicated Circuit
Internet:	Hardwired Internet Connection with RJ45 Receptacle

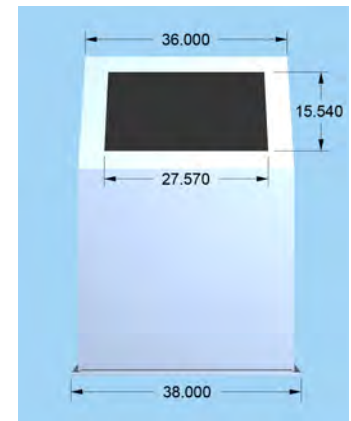
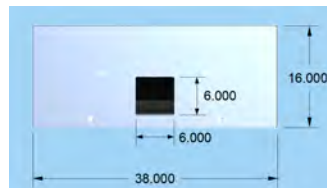
**Maintenance Access:**  
Two (2) Locked Removable Panels to access the Display and Computer from the rear of the kiosk.

## Dimensions

Height:	54.575"
Width:	36"
Depth:	4"
Base Width:	38"
Base Depth:	16"

## Installation

**Bottom Base:**  
Base can be attached to the floor using bolts or adhesive material.



# Digital Building Information Center

Standard Directory Menu



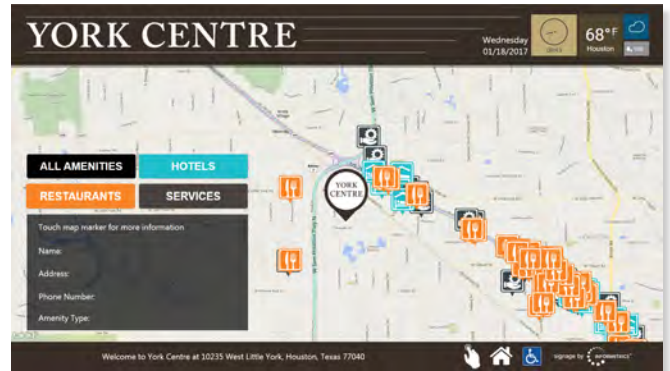
Custom Directory Menu



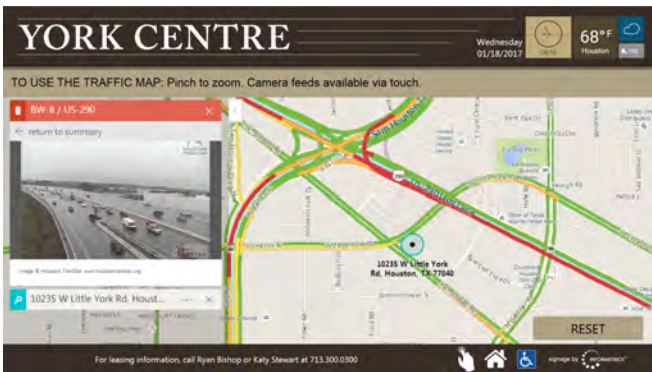
Directory Application



Area Amenities Map



Local Traffic



5 Day Weather Forecast

