

# A-4200 Slant Back Kiosk



- ▣ **Directory Application**  
 Companies/Organizations/  
 Tenants and People  
 Search by Tenant or Person  
 Updated within Seconds Online
- ▣ **Building Information**
- ▣ **Area Amenities Map**
- ▣ **Weather**  
 Current Weather Conditions  
 5 Day Weather Forecast
- ▣ **Local Traffic**  
 Camera Feeds Available via Touch
- ▣ **Ad Rotator**  
 Graphic Announcements or Ads  
 Updated via Admin Online
- ▣ **News Feed Text Ticker**  
 Text Announcements  
 Updated via Admin Online

## Description

Model:	A-4200
Description:	Slant Back Kiosk
Orientation:	Landscape
Enclosure:	Stainless Steel
Display:	42" Touch
Computer:	Ultra-Small Form Factor PC
Ventilation:	AC Infinity AI-CFD80BA Dual 80 Quiet
Power:	100-240 VAC, 50/60 Hz Dedicated Circuit
Internet:	Hardwired Internet Connection with RJ45 Receptacle

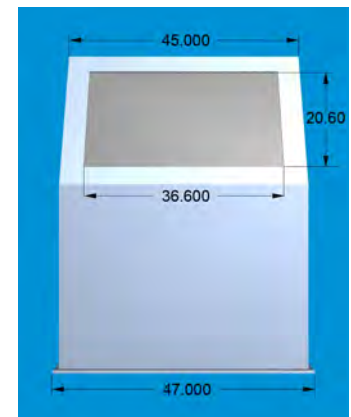
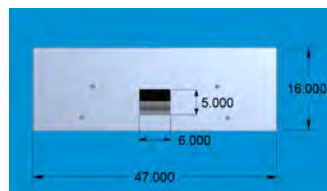
**Maintenance Access:**  
 Two (2) Locked Removable Panels to access the Display and Computer from the rear of the kiosk.

## Dimensions

Height:	59.575"
Width:	45"
Depth:	4"
Base Width:	47"
Base Depth:	16"

## Installation

**Bottom Base:**  
 Base can be attached to the floor using bolts or adhesive material.



# Digital Building Information Center

Standard Directory Menu



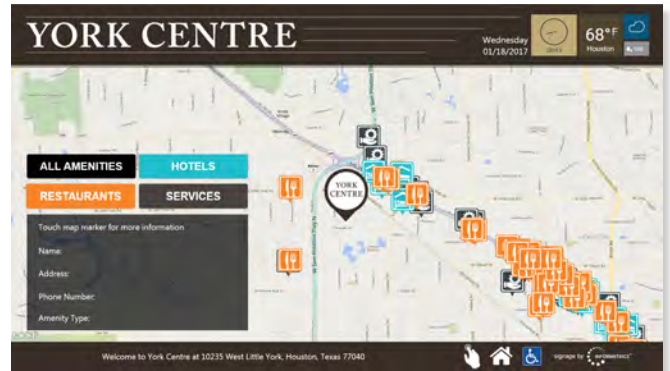
Custom Directory Menu



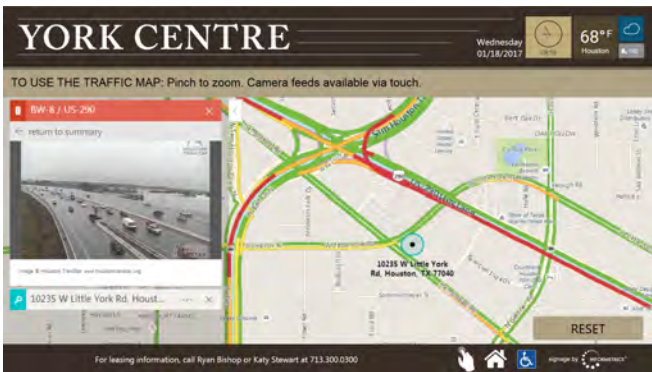
Directory Application



Area Amenities Map



Local Traffic



5 Day Weather Forecast

