

WL-2700 Wall Mount



- ▣ **Directory Application**
 Companies/Organizations/
 Tenants and People
 Search by Tenant or Person
 Updated within Seconds Online
- ▣ **Building Information**
- ▣ **Area Amenities Map**
- ▣ **Weather**
 Current Weather Conditions
 5 Day Weather Forecast
- ▣ **Local Traffic**
 Camera Feeds Available via Touch
- ▣ **Ad Rotator**
 Graphic Announcements or Ads
 Updated via Admin Online
- ▣ **News Feed Text Ticker**
 Text Announcements
 Updated via Admin Online

Description

Model:	WL-2700
Description:	Wall Mount
Orientation:	Landscape
Enclosure:	Stainless Steel
Display:	27" Touch
Computer:	Ultra-Small Form Factor PC
Ventilation:	AC Infinity AI-CFD80BA Dual 80 Quiet
Power:	100-240 VAC, 50/60 Hz Dedicated Circuit
Internet:	Hardwired Internet Connection with RJ45 Receptacle

Maintenance Access:
 Cover is easily removed from the front for
 access to all internal components.

Dimensions

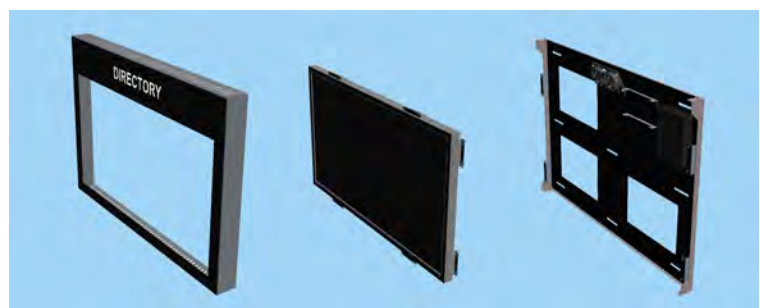
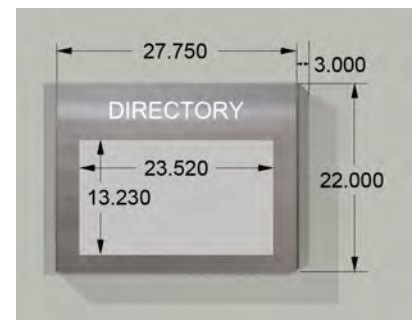
Height:	22"
Width:	27.75"
Depth:	3"

Active Area

Height:	23.52"
Width:	13.23"

Installation

Installation is as simple as mounting the back mounting plate on the wall, affixing the display and computer to the mounting plate, connecting the equipment, and placing the cover on.



Digital Building Information Center

Standard Directory Menu



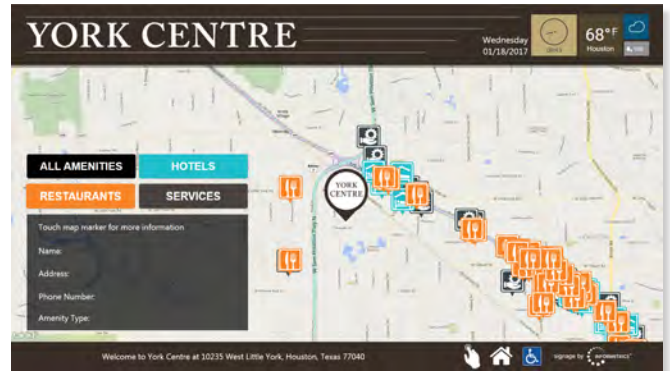
Custom Directory Menu



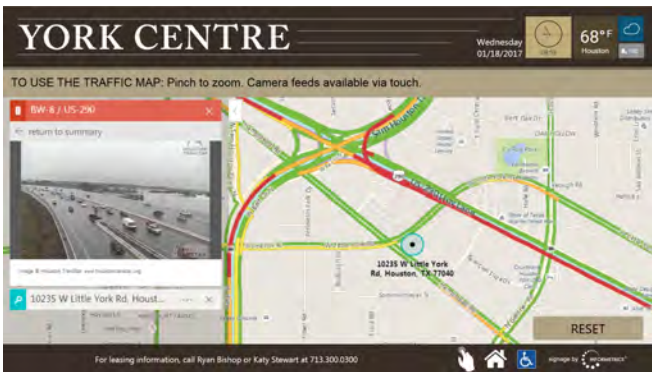
Directory Application



Area Amenities Map



Local Traffic



5 Day Weather Forecast

